

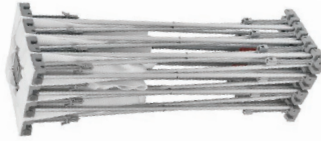
**5 x 3 OneFabric Flat**  
OP053F



**PARTS**



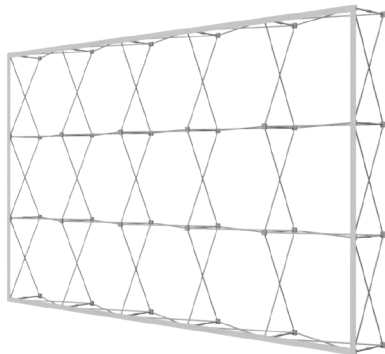
Wheeled Bag



Frame



Graphic



**DISPLAY CONSTRUCTION**

Aluminum frame

**GRAPHIC MATERIAL & FINISHING**

Dye sublimated on One Planet, 100% recycled, fabric.

Bottles Recycled

Graphic without end caps

**99**

Graphic with end caps

**115**

**LIMITED WARRANTY**

- Frame : Lifetime

- Graphics : 30 days

**DIMENSIONS**

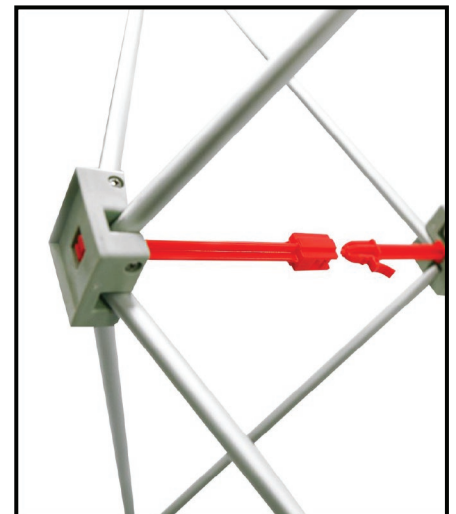
Assembled Unit	147" w x 89" h
Graphic Size	No end caps : 147" w x 89" h With end caps : 174.5" w x 89" h
Shipping Box	Frame only : (1) 36" w x 14" h x 14" d, 31 lbs Graphic without end caps: (1) 12" w x 10" h x 8" d, 13 lbs Graphic with end caps: (1) 12" w x 10" h x 8" d, 15 lbs



① Place frame on floor with the Velcro facing upward.



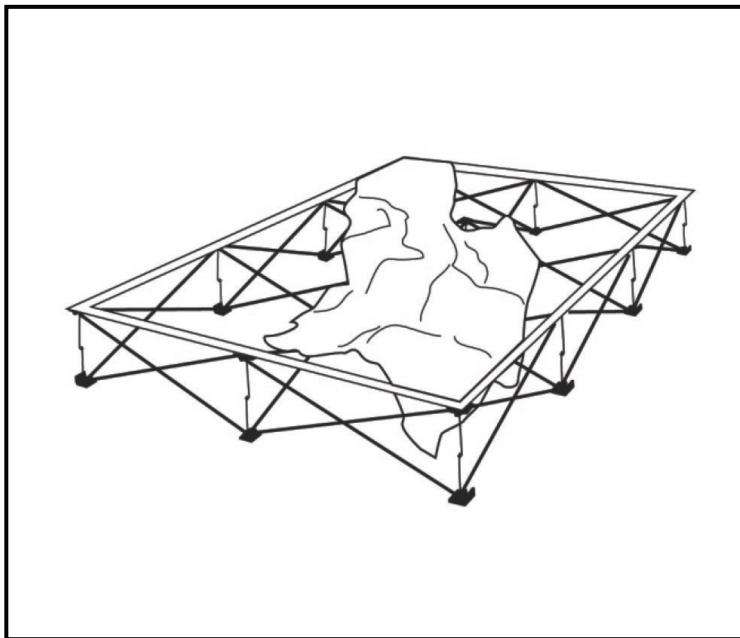
② Begin to expand frame by gently pulling the upper hubs apart until fully spread apart.



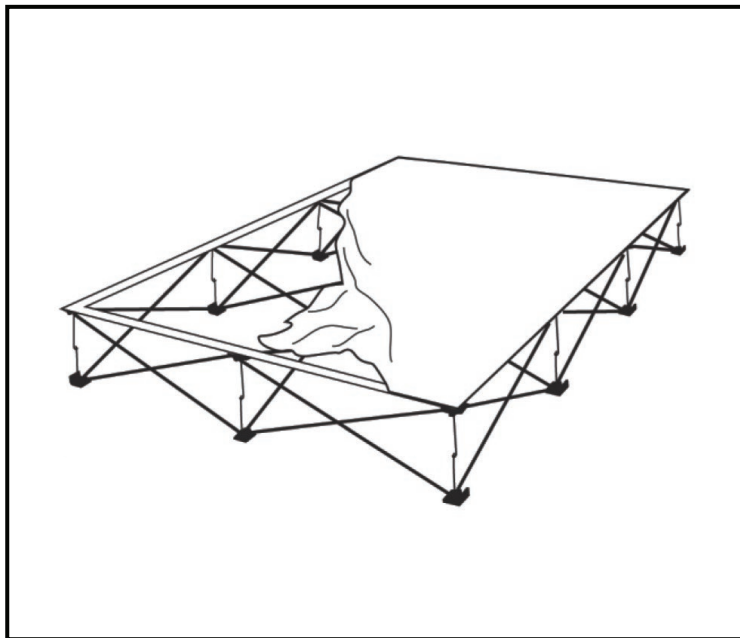
② Clip connectors together to securely lock in place.

# 5 x 3 OneFabric Flat

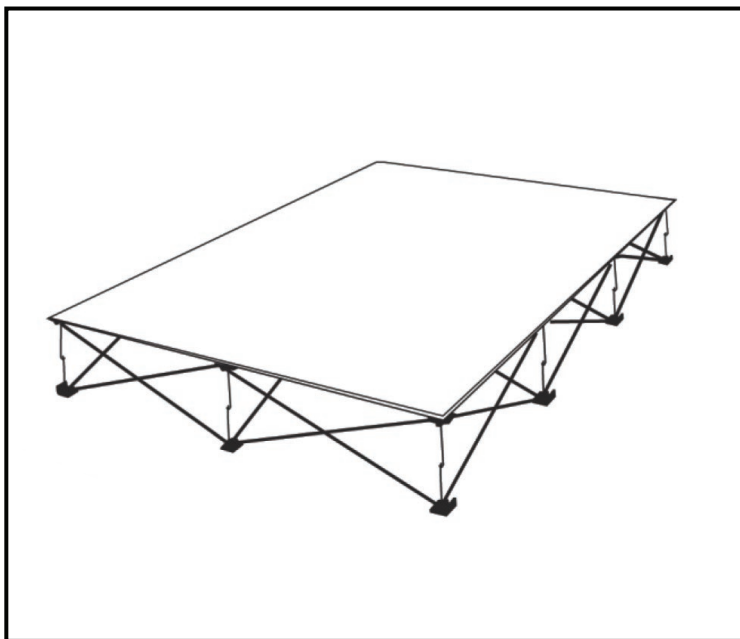
OP053F



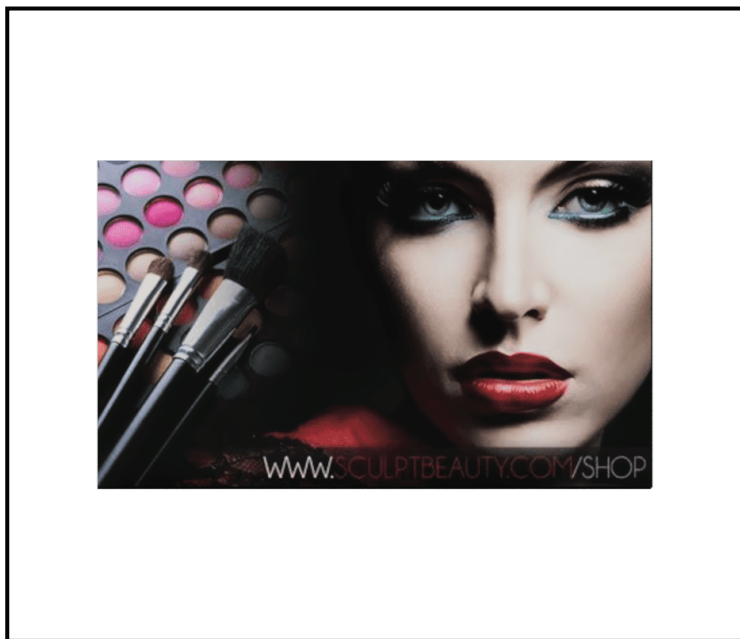
- 5 Starting from one corner, attach loop on the edge of the graphic to the hook strips on the frame.



- 6 Work in continuous direction around the frame until graphic is completely attached.



- 7 If needed, adjust Velcro for a tighter finish.



- 8 Lift upright and enjoy!

## IMPORTANT DISSASSEMBLY INSTRUCTIONS WARNING! DO NOT FORCE CLOSE

To avoid damage, all connectors must be disconnected before collapsing the frame.

